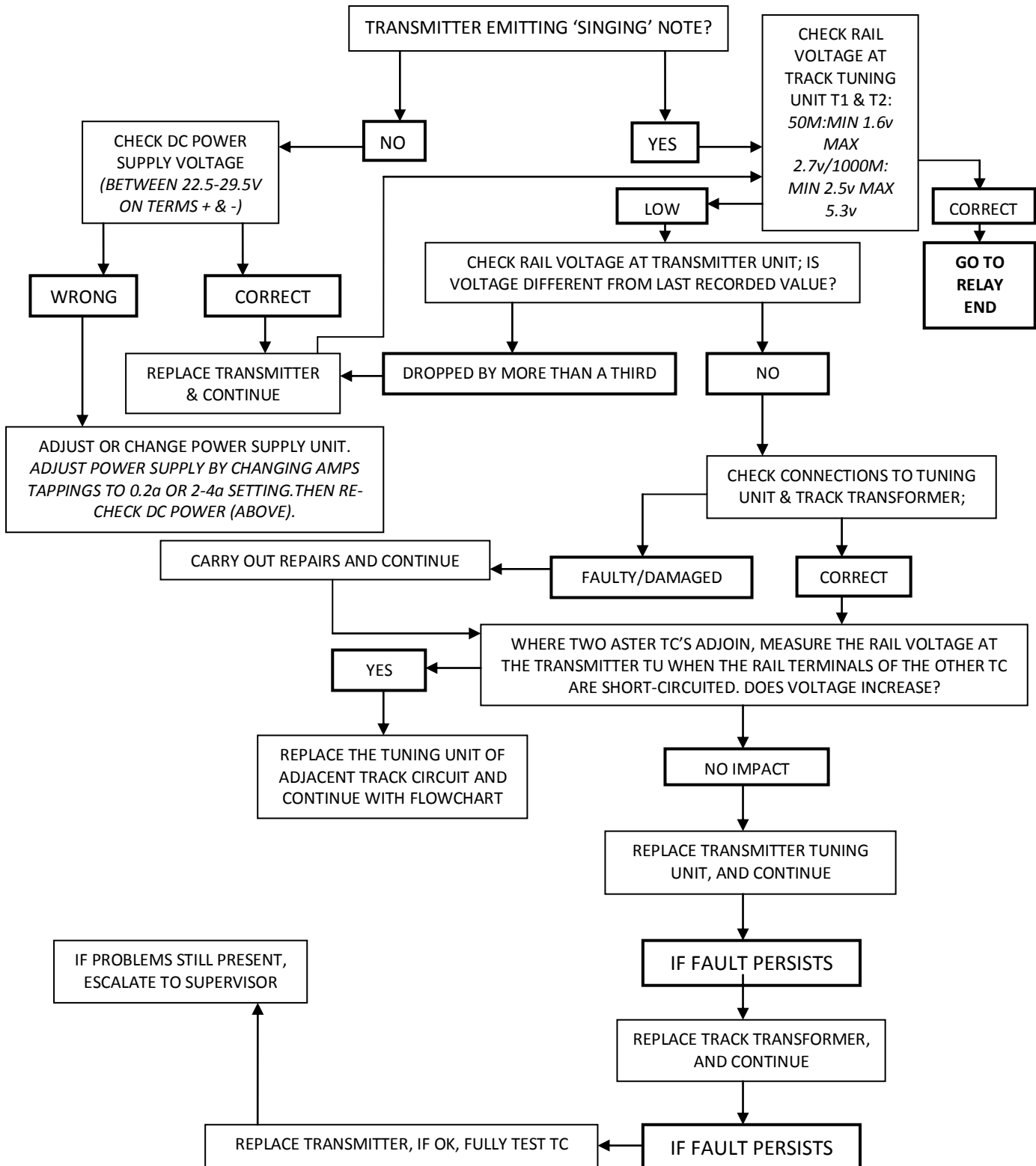


Aster 'U' type fault finding flowchart: FEED END

(Carry out all steps even if a problem is found early on as other faults may be present)



Important Notes:

- The train shunt must NEVER be used on the relay coil R1 / R2 as this would result in damage to the receiver.
- When readings are taken on the rails, track transformer, tuning unit, transmitter or receiver, voltages will be present from both aster track circuits where two adjoin:
- To avoid false readings, the transmitters of the adjacent track circuits must be disconnected, UNLESS a frequency selective meter is being used. **CONSULT the relevant documents in relation to disconnecting aster track circuits, a wrong side failure could occur if correct procedures are not followed.**

This document is uncontrolled and is NOT Network Rail endorsed, it is however taken from official Aster 'U' type track circuit notes. It may be subject to errors or omissions, therefore it is only a guide, it must not be used for testing or commissioning purposes. SMS's and SMTH MUST always be followed before a TC is returned to service.